



MICHIGAN PHILHARMONIC

Nan Washburn, Music Director & Conductor



MUSIC IN HD

2011-12 Season



ORDER Tickets

Season 66 • 2011-2012

SEASON SUBSCRIPTIONS - Choose Your Favorite Five

General _____	x \$110	_____	TOTAL
Senior _____	x \$85	_____	
Student _____	x \$40	_____	
Add a 6th Season Concert for only \$15 (per subscription)		_____	
Circle your choices:			
10/8	11/13	12/15 @ 6 pm	12/15 @ 8 pm
1/15	2/12	3/3	

SINGLE TICKETS

	General	Senior	Student	
Season Concerts	\$22	\$18	\$10	
Sat, October 8, 2011 • 7:30 pm	_____	_____	_____	_____
Sun, November 13, 2011 • 2 pm	_____	_____	_____	_____
Thur, December 15, 2011 • 6 pm	_____	_____	_____	_____
Thur, December 15, 2011 • 8 pm	_____	_____	_____	_____
Sun, January 15, 2012 • 2 pm	_____	_____	_____	_____
Sun, February 12, 2012 • 2 pm	_____	_____	_____	_____
Sat, March 3, 2012 • 7:30 pm	_____	_____	_____	_____

MUSICAL TREATS

Musical Treats are a series of fun events in between the concerts - Join us for 1 or 2 or all 5!

Can't Decide? Try them all!

Special Musical Treat Series Price - \$195 for all 5 events (a \$215 value) OR 2 MT Series for \$350 (a \$430 value) OR choose your favorite 3 for only \$90 (excludes Noel Night)

Comari's Catered Rooftop Dinner - Friday, September 2, 2011 • 6:00 pm

\$50 per person _____

Girl's Night Out! - Wednesday, October 5, 2011 • 6:00 pm

\$35 per person _____

Noel Night - Thursday, December 8, 2011 • 7:30 pm

\$65 per person _____

Music to Make Wine By - February 2012 • Date TBA • 6:00 - 8:00 pm

\$30 per person _____ \$50 per couple _____

Classical Gas at the Tipping Point - Saturday, April 28, 2012 • 7:30 pm

\$35 per person _____ \$60 per couple _____

Questions call: 734.451.2112

GRAND TOTAL for Concerts and/or Musical Treats \$ _____

PAYMENT INFORMATION

Name: _____

Address: _____

City/Zip: _____

Phone: _____ Email: _____

_____ Check enclosed payable to Michigan Philharmonic

_____ Charge to: _____ VISA _____ MC

Card No: _____

Exp Date: _____ 3-digit security code: _____

Signature: _____



"Under the direction of conductor Nan Washburn...the Symphony remains one of the most ambitious orchestras of its size in the country."

- Mark Stryker, DETROIT FREE PRESS



Special thanks to: Design: Julie Nyhus, Nyhus Design. and Michelle Dean "Home for the Holidays" Illustration.

MICHIGAN PHILHARMONIC

Nan Washburn, Music Director & Conductor

PO Box 6379 • Plymouth, MI 48170

734.451.2112



Symphony Season Sponsored by Bank of Ann Arbor www.boaa.com

NON-PROFIT ORG. U.S. POSTAGE PAID PERMIT NO. 13 PLYMOUTH, MI 48170

www.michiganphil.org



The Red Violin

October 8, 2011 • 7:30 pm
Village Theater at Cherry Hill, Canton
Anicka Skálová, violin

OPENING NIGHT



The season begins with Tchaikovsky's "Little Russian" Symphony No. 2 and two box-office blockbuster film scores from "Mr. Holland's Opus" and "The Red Violin" featuring violinist Anicka Skálová.

- Kamen An American Symphony
- Corigliano *The Red Violin: Chaconne*
- Tchaikovsky *Symphony No. 2*

Música de las Américas

November 13, 2011 • 2:00 pm
Village Theater at Cherry Hill, Canton
Gabriela Lena Frank, composer

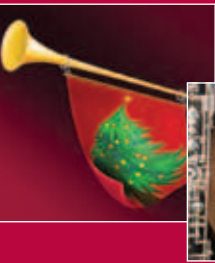
Celebrating sounds from the U.S. and Latin America, "Música de las Américas" features the colorful works Malegüena, *Bachianas Brasileiras No. 5*, an orchestral showcase from Argentina and the new Peruvian-inspired work by Gabriela Lena Frank.



- Lecuona *Malagueña*
- Villa-Lobos *Bachianas Brasileiras No. 5*
- Gabriela Lena Frank *Elegía Andina*
- Revueltas *Ocho Por Radio*
- Ginastera *Variaciones Concertantes*

Home for the Holidays

December 15, 2011 •
6:00 pm - Family Concert
8:00 pm - Traditional Concert, performance featuring Nermis Mieses, oboe
Penn Theatre, Plymouth



A festive, family-friendly concert includes traditional holiday pops favorites ending with a classic, old-time, Christmas Carol sing-along and a joyous rendition of Handel's "Hallelujah Chorus."

Miniature Masterpieces

January 15, 2012 • 2:00 pm
The Inn at St. John's Chapel, Plymouth
Melody Racine, mezzo-soprano
Andre Myers, composer

Featuring "big" music for our intimate chamber orchestra, the concert includes smaller versions of Debussy's famous *Afternoon of a Faun* and Mahler's *Songs of a Wayfarer* (Melody Racine mezzo-soprano) along with a toe-tapping Irish jig *Molly on the Shore* and a new work by Michigan Phil favorite composer, Andre Myers.



- Grainger *Molly on the Shore*
- Debussy/Sachs *Prelude to the Afternoon of a Faun*
- Mahler/Schoenberg *Songs of a Wayfarer*
- Rossini *Serenata per Piccolo Complesso*
- Andre Myers *Changes (2011) (World Premiere)*
- Prokofiev *Overture on Hebrew Themes*

MUSIC IN HD

2011-12 Season

2011

SEPTEMBER

S	M	T	W	T	F	S
				1	2	3
4	5	6	7	8	9	10
11	12	13	14	15	16	17
18	19	20	21	22	23	24
25	26	27	28	29	30	

OCTOBER

S	M	T	W	T	F	S
2	3	4	5	6	7	8
9	10	11	12	13	14	15
16	17	18	19	20	21	22
23	24	25	26	27	28	29
30	31					

NOVEMBER

S	M	T	W	T	F	S
6	7	8	9	10	11	12
13	14	15	16	17	18	19
20	21	22	23	24	25	26
27	28	29	30			

DECEMBER

S	M	T	W	T	F	S
4	5	6	7	8	9	10
11	12	13	14	15	16	17
18	19	20	21	22	23	24
25	26	27	28	29	30	31

2012

JANUARY

S	M	T	W	T	F	S
1	2	3	4	5	6	7
8	9	10	11	12	13	14
15	16	17	18	19	20	21
22	23	24	25	26	27	28
29	30	31				

FEBRUARY

S	M	T	W	T	F	S
5	6	7	8	9	10	11
12	13	14	15	16	17	18
19	20	21	22	23	24	25
26	27	28	29			

MARCH

S	M	T	W	T	F	S
4	5	6	7	8	9	10
11	12	13	14	15	16	17
18	19	20	21	22	23	24
25	26	27	28	29	30	31

APRIL

S	M	T	W	T	F	S
8	9	10	11	12	13	14
15	16	17	18	19	20	21
22	23	24	25	26	27	28
29	30					

MAY

S	M	T	W	T	F	S
6	7	8	9	10	11	12
13	14	15	16	17	18	19
20	21	22	23	24	25	26
27	28	29	30	31		

JUNE

S	M	T	W	T	F	S
3	4	5	TBA	7	8	9
10	11	12	13	14	15	16
17	18	19	20	21	22	23
24	25	26	27	28	29	30

Performance Locations

- Penn Theatre:** 760 Penniman Avenue, Plymouth, MI 48170
The Village Theater at Cherry Hill: 50400 Cherry Hill Road, Canton, MI 48184
The Inn at St. John's Chapel: 44011 Five Mile Road, Plymouth, MI 48170
First United Methodist Church: 45201 N. Territorial Road, Plymouth, MI 48170

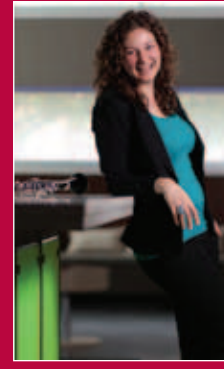
MICHIGAN PHILHARMONIC

Nan Washburn, Music Director & Conductor

www.michiganphil.org

Sunday with Schubert

February 12, 2012 • 2:00 pm
First United Methodist Church, Plymouth
Lisa Raschiatore, clarinet



Our own principal clarinetist Lisa Raschiatore steps out as the soloist for Aaron Copland's jazzy *Clarinet Concerto* on a concert that includes Schubert's lyric *Symphony No. 5* and the little known treasure, *Concerto for 12* by 18th century composer, Anna Amalie.

- Anna Amalia *Concerto for 12*
- Copland *Clarinet Concerto*
- Schubert *Symphony No. 5*

Photo: Andrew Le Photography

Russian Fireworks

March 3, 2012 • 7:30 pm
Village Theater at Cherry Hill, Canton
Michael Gilbertson, composer

Sparkling season finale features the monumental *Symphony No. 5* by Shostakovich, audience favorites Glinka's *Ruslan and Ludmilla Overture* and Borodin's *Polovtsian Dances*, a world premiere of *Polovtsia* by the dynamic young composer, Michael Gilbertson and a side-by-side performance with the Michigan Philharmonic Youth Orchestra.



- Glinka *Ruslan and Ludmilla Overture*
- Borodin Selections from *Polovtsian Dances*
- Michael Gilbertson *Polovtsia: Music to an Imaginary Ballet (2011) (World Premiere)*
- Shostakovich *Symphony No. 5*

SPECIAL EVENTS

Música de las Américas
Saturday, November 12, 2011 • 8:00 pm
The Arts League of Michigan in Harmonie Park Detroit
For more information on this concert please call the office 734.451.2112 or visit www.artsleague.org

The Nutcracker
December 3, 2011 • 6:30 pm
December 4, 2011 • 2:00 pm
The Michigan Philharmonic with the Plymouth Canton Ballet Company at Salem High School Auditorium
For tickets and information www.michiganphil.org or www.metroshoresballet.org

Michigan Philharmonic Bollywood Music Festival
Saturday, May 19, 2012 • 8:00 pm
The Music Hall - Detroit
Featuring Indian singer, soloists and percussion celebrating the music of Bollywood in an exciting, high-energy performance.
For tickets and information visit www.michiganphil.org



Symphony Season Sponsored by Bank of Ann Arbor
www.boaa.com

MUSICAL TREATS EVENTS



Series of delightful events featuring good wine, good food, good music and good friends will appeal to all your senses.

Comari's Catered Rooftop Dinner

Friday, September 2, 2011 • 6 pm • \$50 per person
Enjoy the last taste of summer in Downtown Plymouth enjoying dinner and the Concert in the Park from above the crowd!

Girl's Night Out!

Wednesday, October 5, 2011 • 6:00 pm • \$35 per person
Back by popular demand-fashion show, lots of tastings and dinner!

Noel Night

Thursday, December 8, 2011 • 7:30 pm • \$65 per person
Back to the Hall Home for a Holiday celebration of magnificent decorations, music, wine and fun!

Music to Make Wine By

February 2012 • Date TBA • 6:00-8:00 pm
\$30 per person or \$50 per couple
Taste all the wines and enjoy the authentic Italian Pizzas at Cellar 849 in downtown Plymouth - win a chance to make your own wine.

Classical Gas at the Tipping Point

Saturday, April 28, 2012 • 7:30 pm
\$35 per person or \$60 per couple
Enjoy a wine tasting while members of the Michigan Phil perform the music of the 60's and 70's in classical style at the Tipping Point Theater in Northville.

BACKSTAGE PASS EVENTS



Learn more about the people behind the music

We invite anyone interested in learning more about music to attend the Michigan Philharmonic "Backstage Pass", an informal group of music lovers who want the opportunity to meet the musicians in the orchestra, and perhaps a composer or two.

Thursday, September 15, 2011 • 7:00 pm

Thursday, November 17, 2011 • 7:00 pm

Thursday, January 19, 2012 • 7:00 pm

Thursday, March 15, 2012 • 7:00 pm

Thursday, May 17, 2012 • 7:00 pm

This event is FREE and open to the public. Come join us!

Liberty Street Brewing Company
149 W. Liberty Street
Plymouth's Old Village

YOUTH ORCHESTRA EVENTS



Michigan Philharmonic Youth Orchestra provides a unique, enriching and exciting musical experience for aspiring young musicians throughout Southeastern Michigan. MPYO currently offers a full program of three orchestras and a flute choir, workshops and master classes with prominent guest soloists and composers and yearly side-by-side performances with the professional musicians of the Michigan Philharmonic. MPYO performs two major concerts:

Tuesday, December 6, 2011 at Village Theater, Canton
Tuesday, May 8, 2012 at Dubois Little Theatre, Canton

The Friends of the Michigan Philharmonic is an affordable way for our friends in the community to help the orchestra continue to offer the high quality level of performance which has grown under the direction of Conductor, Nan Washburn over the past 13 years!



We hope you become a "Friend of Music." With your help we will be able to preserve this fine orchestra for the enjoyment of generations to come. Please consider joining us today!

For more info about the Friends of the Phil, visit www.michiganphil.org/Support/Friends.html or call 734.451.2112.